



Message from the Chairperson

Thank you very much for your interest in knowing about JMC. We welcome your prudent decision of joining this institution where you will be going to be a part of a vibrant learning community which is well known for its high quality education and its excellent student support activities in the country as well as abroad.

We are proud of our students, teaching and management staff as well as our academics and social activists for having created a history of both academic and extra-curricular excellence. We prove our academic excellence by complying with the standards of education specified by University Grant Commission (UGC) with the financial support of the World Bank. Now we are producing globally recognized graduates.

In the end, we are committed to good governance and academic autonomy. We would like to request our stakeholders for their help and support to develop this public campus into the deemed university.

Message from the Campus Chief

Janapriya Multiple Campus (JMC) is an assembly of prominent scholars, academicians, professionals and social activists working together as a team to create an institution for quality education for those students who really want to excel and achieve something special in their life professionally. The two decades' excellence of the campus now has become synonymous to innovative teaching learning activities. University Grant Commission, Nepal has granted us QAA certificate for our academic excellence. The government of Nepal rewarded our campus with National Education Award continuously for two years, i.e., for 2015 and 2016 AD. The campus management is committed to carrying out its dream and vision.

JMC has been excelling both in Bachelor's and Master's level. It is the sole identity of the campus that it has been running first BBA program out of Kathmandu valley, affiliated to Tribhuvan University. Result of BBA at JMC is incomparable and distinct.

At this juncture, I would like to place on record, my sincere gratitude to our students, teaching and non teaching staff, parents and management committee for reposing their trust in us. I would like to appreciate the support of World Bank (WB) and University Grant Commission (UGC) to make this campus able to receive Quality Assurance and Accreditation (QAA) certificate.

Janapriya at a Glance :

Janapriya Multiple Campus (JMC) is a QAA certified leading community campus of the country. It is a nonprofit making, philanthropic and community run campus affiliated to TU, established in 1991 with the painstaking endeavor and contribution of local people, local organizations, and academicians. Since the period of its establishment, local community has been actively participating in the overall development of the campus. JMC is dedicated to offer meritorious education at all levels at reasonable cost.

JMC has been running various academic programs in Management, Education, Science and Humanities both in Bachelor's and Master's level. It is devoted to bring out well trained, skilled and educated

citizen capable to gear up the productive and overall development activities required for the various spheres of the region and the nation. JMC recognizes the growing stratum of socio-economic growth and changes coming after the human resource furnished with changing attitudes, values, beliefs, ideas, aspiration, skill and knowledge.

JMC is located at the core point of Pokhara Sub-metropolis and is accessible from all the wards of the city. Most of the students come from the rural and remote areas of surrounding districts, such as Syangja, Tanahun, Gorkha, Lamjung, Parbat, Baglung, Myagdi, Mustang and so on. JMC is famous for low cost and high performance. JMC stands for quality education and result oriented attitude.

JMC Sets apart to other campuses in Pokhara for :

- Quality education and result oriented attitude.
- Regularity in teaching learning and friendly environment
- Riskless milieu of student stir and strike.
- Affordable fee structure.
- Provision of sufficient free-ships/scholarship to the needy, and intelligent students.
- Low cost and high performance.
- Centrally located point of the town and easy access.

Vision :

JMC envisions of developing globally recognized competent human resources and innovative entrepreneurs for Change.

Mission:

We are committed to become a 'Center of Excellence' & advance towards 'Deemed University'.

Goals :

- Produce creative, disciplined & responsible citizens with practical knowledge and applied skills.
- Strengthen & expand academic programs
- Develop human resources as per market demand
- Ensure Quality education
- Promote institutional research
- Materialize the financial sustainability of the campus
- Produce socially responsible, creative and capable human resource for the socio-economic development of Nepal.
- Prepare professionals, entrepreneurs and executives capable for managing and promoting business and social organizations in national and global context.
- Conduct case study and research-based activities for updating the knowledge and skill based on practical approach to develop the campus as 'Centre of Excellence'.
- Establish linkages with business, social and academic institutes within the country as well as abroad and collaborate for the better exposure changing paradigm in this dynamic context.

Time Shift:

Morning : 6 am to 10.10 am

Master's, BBS, BA, B Sc, and B Ed

Day : 11 am to 5 pm BBA and BBS



Teaching Modality and Pedagogy

JMC facilitates to teach and learn in an impulsive breaking modality to nurture the potentiality and ingenuity of students. The campus endeavors to teach, counsel and instruct to enhance the development of conceptual knowledge, create market relevant skills and right attitudes. Generally the following procedures have been applied as teaching pedagogy in JMC:

- | | |
|---------------------------|------------------------------|
| • Lectures | - Seminar/presentation |
| • Workshop/conference | - Paper writing/presentation |
| • Case analysis | - Internship |
| • Field/project work | - Home assignment |
| • Thesis/research writing | - Observation/Discussion |

Scholarships

JMC provides scholarship to the needy and intelligent students as per their academic performance. Full and partial Scholarships are available for the top three students of their respective class toppers in bachelor and master level. Out of the total enrollment 10 percent of the students get scholarship in JMC on the basis of merit, social inclusion and intelligence.

| | |
|---|----|
| • Students should pass the internal exam for getting scholarship Marking Scheme | |
| • Internal Exam - | 25 |
| • Economic Condition - | 25 |
| • Distance from the Campus - | 10 |
| • Marks of Lower Level - | 10 |
| • Janajati - | 5 |
| • Girls - | 5 |
| • Dalits - | 10 |
| • Disables - | 10 |

JMC Achievements



Master's Level Programs in JMC

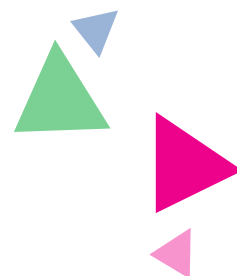
JMC has launched the following master's level programs at present with the aim of deemed university in near future.

- Master of Business Studies (M.B.S.)
- Master of Arts in English (M.A.)
- Master of Arts in Sociology (M.A.)

We have the provision of inviting the visiting professors and professional scholars from social and business sectors for guest lecture related to the subjects that enhance the exposure of students. In order to foster their hidden potentiality, we provide ample opportunities to our master level students to interact with the scholars and present their own views on the given topics related to their subject matter.

B.Sc. (Microbiology)

Microbiology is the emerging discipline of biological sciences. It is the study of organisms that are invisible to the naked eye, such as viruses, bacteria, archaea, fungi, algae and protozoa, at both cellular and molecular level as well as their ecology. Society has experienced the importance of microbiology in many ways since ancient times and microbial diseases undoubtedly played a major role in historical events. Microbiology is required to face the threat of new and reemerging human infections, to study various genetics phenomena and to develop agricultural and industrial technologies that are more efficient and environmentally friendly. Microbiology is the most rewarding of professions with clearer mission than other scientific disciplines and probably the top biological science in world with greatest research activities. Most of the works in microbiology are laboratory-based. JMC has been running this program since 2009.



BBA Program

JMC is the first institution to run TU affiliated BBA program outside Kathmandu Valley. It has been running this program since 2003 and has secured an excellent result each year. Our students have frequently topped the board examination conducted by the office of the Dean, Management Faculty, TU. Now it has become an educational hub where hundreds of students apply to join each year and only limited numbers get success.

Eligibility for Admission

The Candidates applying for BBA program must:
Secure at least second division in the +2 program from any board or institution recognized by TU.
Comply with all the application procedures.

Written Test (CMAT)

Applicant are required to appear in the Central Management Admission Test (CMAT) Examination conducted by the Tribhuvan University Faculty of Management. Student must secure minimum 40% score in the CMAT examination in order to be qualified for the enrollment. The examination follows the standard test patterns and includes areas like verbal ability, quantitative ability, logical reasoning, and general awareness.

Interviews

Only CMAT passed candidates will be interviewed and selected for admission as per merit basis.

Ratings

| Criteria | Scores |
|-----------|---------------|
| CMAT | 60 Equivalent |
| +2 | 30 Equivalent |
| Interview | 10 Equivalent |
| Total | 100 |

Only 64 candidates will be selected for enrollment in the program (BBA) on the merit basis. Among those candidates, four candidates will be selected from those who completed SLC from Government school.

Computer Lab

JMC computer lab is technically well-equipped with latest model of the computer and networking facilities, internet access for online education throughout the day.



Lab Activities



Sports and Social Events

JMC encourages students to participate in sports, both indoor and outdoor including volleyball, table tennis, basketball, badminton and music at the JMC complex. In addition, we organize various social activities like blood donation, cultural program, etc. Competitive sporting events are held in the form of regular inter section as well as inter level matches and there are many opportunities for students to develop their physical fitness and health.



Library

JMC provides an up-to-date and well-furnished library to facilitate the process of teaching learning activities. It has a wide range of books, periodic research journals, audio and visual materials, online services for digital study materials.

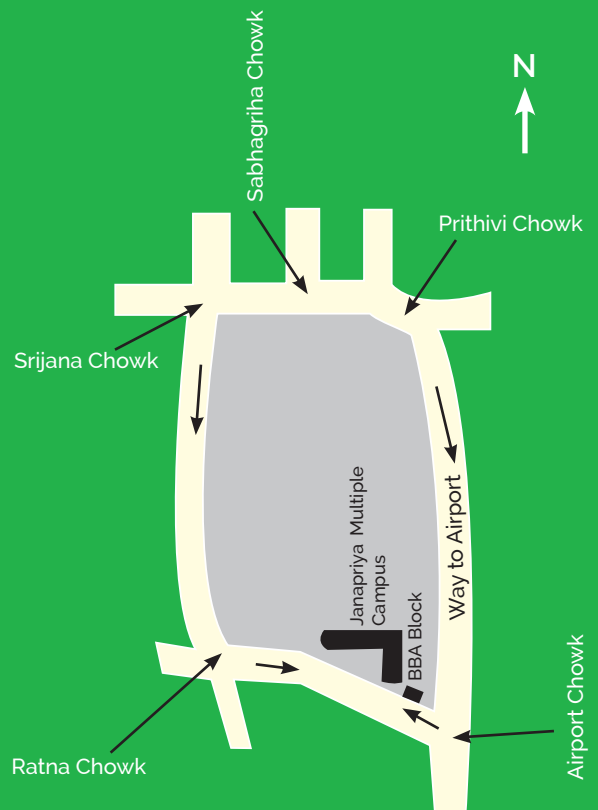


Publication



JMC has formed a separate cell, **Janapriya Research and Consultancy Center (JRCC)**, for research activities and publication of research journals. It annually publishes research journals like "Journal of Interdisciplinary Studies." And teacher's union publishes "Janapragyamanch" every year. The report of field visit, case studies and their presentation activities are published in the Bulletin.

Location





JMC for your choice

JMC, founded by the team of experienced professors and social workers, supports your learning with a rich experience and makes you competitive with the following activities:

- Seminars and workshops in emerging issues on management
- Short term training for professional skills as far as practicable
- Training on statistical software for research and scientific writing
- Provision of job placement facility as much as possible
- Regular interactions and experience sharing with professionals and executives

Janapriya Multiple Campus

(QAA Certified by UGC Nepal)



Janapriya Marga, Pokhara-8, Nepal



061- 522287, 531822



office@janapriya.edu.np



www.janapriya.edu.np