

# GLOBAL SCHOOL *of* SCIENCE

**+2**  
SCIENCE



*An Exclusive Center of +2 Science*





AN  
EXCLUSIVE  
CENTER OF  
**+2 SCIENCE**

## CONTENTS

- > MESSAGE FROM THE CEO | 04
- > PROFESSIONAL EDUCATORS LIMITED | 05
- DEPUTY MANAGING DIRECTOR'S MESSAGE | 06
  - > EXPERT SAYS | 08
- > MESSAGE FROM THE PRINCIPAL | 09
- > FROM THE ACADEMIC DIRECTOR | 10
  - > GLOBAL SCHOOL OF SCIENCE | 11
    - > GSS PHILOSOPHY | 14
    - > PROGRAM DIRECTOR SAYS... | 16
- > WHY GSS IS A UNIQUE CENTER OF LEARNING SCIENCE? | 21
- > DISTINCTIVE ACADEMIC APPROACHES | 25
  - > COUNSELING | 32
- > STUDENT INITIATED CELEBRATIONS | 36
  - > HUMAN RESOURCES | 38
  - > FACILITIES AND RESOURCES | 40
    - > SCHOLARSHIP | 48
    - > ADMISSION CRITERIA | 51

## MESSAGE FROM THE CEO

**Dear Valued Students and Parents,**

**Thank you for your trust and interest upon Global School of Science (GSS). My inspiration behind launching of GSS is to educate a whole person for progressive career in science, engineering, medical profession and more. Personally, I believe that young people be acquainted with and follow their passion in science in order to significantly contribute for the betterment of self and communities at large.**

The present and future circumstances, also manifested from COVID-19 pandemic, will become far more complex that shall indeed challenge the new generations hence, it will be necessary for us and our generations to remain prepared to cope with. Amid the emerging contexts as these and by predisposition as an educator, I have long felt that there is a dire need of a focused center for study in science that will prepare future scientists, doctors, engineers, and skilled workforce who shall not only learn to survive but efficiently

cope with the challenges and changes that are unprecedented. In short, launching of Global School of Science is in the pre-ground of emerging natural, medical etc. complexities and evolving demands of a learning center of excellence dedicated to delivering quality education in Science.

In response to the increasing demands, we have developed GSS as an exclusive center of + 2 Science that is immensely resourceful and is fully prepared upon the dynamic systems with cutting-edge facilities. With the enriching facilities and association of expert team, hence GSS guarantees the best academic endowments as required to operate Science program within the conducive and quality enhanced environment. I am delighted that the learning young minds have admired GSS for these distinctive features. It is hence, in this short period of time, GSS has been successful to leave an impression among the young generation as the best learning center for science education.

Inspired from the demands and learner impressions that have been tremendously positive, I feel far highly encouraged to transform GSS as a special project of my life. The journey toward the transformation of GSS has begun with the internal system enhancements supported by new technologies and academic resources as well as the improved collaborations of GSS with external educational agencies that help to benchmark this institution through integration of learning Science with research and innovation which will be instrumental to preparing future scientists, doctors, engineers, and intellectual citizens skilled in science and technology.

With my sole commitment to keep my efforts persistent in responding to the academic demands of our potential students willing to build career in Science, I welcome you to join GSS that is your own "Exclusive Center of +2 Science."

**Khagendra P Ojha, PhD**  
CEO

**I express my sole commitment to keep my efforts persistent in responding to the academic demands of our potential students willing to build career through Global School of Science, an Exclusive Center of +2 Science.**



## PROFESSIONAL EDUCATORS LIMITED

Professional Educators Limited (Pro-Ed), publicly incorporated company founded by a group of scholars, educationists and professionals of high reputation, is a publically renown brand of education. Established in 2004, the company is governed with a 21st century academic vision; to operate science, management and other latent disciplines of education with a special emphasis on academic skills as fundamental for new generations to survive and thrive through this competitive age of modernization pressing individuals to become able citizens with a raised living standard and economic development of the nation. Within the corporate mission, vision and design, Pro-Ed limited owns and manages these reputed academic institutions; Valley View English School, Global School of Science, Global College of Management (NEB and TU programs), Global College International (MU affiliated under graduate and graduate programs), and Liberty College for different academic programs of science and management stream affiliated to both national and international boards and universities.



## DEPUTY MANAGING DIRECTOR'S MESSAGE

**Respected Guardians and Dear Students,**

**It is indeed a matter of happiness that, GSS has secured distinctive educational identity in pursuant to its unique blend of teaching that takes a shape on the practice of innovative learning at this institution known to be 'An Exclusive Center of +2 Science.'**

Committed to building GSS as the best institution, we the team of Professional Educators have intensified our focus that has likewise helped to multiply our efforts on framing this institution as a special center of learning science with potential results that benefit every single student when s/he shall graduate from us. Very recently, our attention has been to make considerably large investment not only to modernize the physical resources but also in the installation of smart technologies that lend the systems, educational support and services which contribute to making teaching effective. Effective teaching in science is there to foster learning in the quality process, let alone the collective contribution of the intellectual resources which GSS is already enriched with.

Keeping student's positive growth on top priority for which the presence of professional minds and skilled hands is indispensable, we, in our highest priority, have deputed groups of eminent educators in faculty and also at the managing level. At this date, GSS engages highly professional individuals in teaching different subjects of science. The teams are dedicated to educating every single student

who has joined GSS in an aspiration and it is to become a perfect learner one who is rich in knowledge and skills. On the same level of significance, our managing team is fully dedicated to providing the students and the teaching members every kind of support that is demanded in order to ensure the best performance along with the attainment of teaching and learning outcomes that we aspire to be best.

With relentless efforts, our team of professional faculty and staff strive for the best quality work that will play crucial role to modernizing GSS for quality education in science on a balanced pace of achieving academic excellence. Driven with this motto i.e. to develop GSS as a center of academic excellence hence, we have guaranteed constructive involvement of the plausibly intellectual and most dynamic expert circles at GSS. The subject experts of this institution are highly trained to engage the learners of GSS in the state-of-the-art physical, technological and intellectual set-up in constituting their own horizon of knowledge.

Set out to building GSS as a center of academic excellence, I would finally like to welcome all SEE graduating students who could be seeking to study science under the mentorship of expert educators and encourage you to take a time to visit this institution and witness the marvelous systems and facilities we have installed in order to prepare you as a future scientist, doctor, engineer and more...

**Drona Lal Puri, PhD**  
Deputy Managing Director



## EXPERT SAYS

Science & technology is a significant area that our young ones should not only be acquainted with but also use them in order to be shaped as knowledgeable, systematic and technology skilled citizen so as to cope with the new encounters of complexity facing our life in the emerging science and technologically ruled contexts. Amidst the emerging challenges such as that have come to each associated with COVID pandemic, it becomes obligatory that our academic institutions make themselves able to develop education in systems that integrate science and educate each aspirant community of learners in practical approaches constituted with innovative models of education that would ideally benefit not only learners but also society as the stakeholders of education in turn. Benchmarking institutions are very much sought after environments where the learner communities can significantly contribute to designing and practise science as an innovative learning process for new inventions to take place.

I do believe the scholarly community of Global School of Science (GSS) has been successful to making a prodigious leap within these 2 years of establishment in delivering most valuable and practicable meaning of science materialized in learning that results in the practice of innovation. I am happy to know that GSS has been fast enough to become a model institution for science & technology. I am also proud that Rashtriya Awishkar Kendra (National Innovation Center) Nepal and Global School of Science have entered in the second phase of institutional partnership which will be directed to facilitate and offer all potential SEE graduates an excellent platform of learning science in practices that involve innovation while delivering top-notch quality education. I encourage all aspirant candidates to consider joining GSS now proven as a success launcher of science education that is sure to help you all to stretch up meaningful career ahead. I wish you all quality time with GSS.

**Mahabir Pun**

Rastriya Anusandhan Abiskar Kendra, Nepal



**Benchmarking institutions are very much sought after environments where the learner communities can significantly contribute to designing and practise science as an innovative learning process for new inventions to take place.**

## MESSAGE FROM THE PRINCIPAL

Dear Parents and Students,

I am delighted that Global school of Science under the ownership of Global College has taken yet another leap of success from its grand launching 2 years back, as an exclusive center of +2 science.

Global School of Science accommodates highly potential students seeking to pursue +2 in Science. The new zeal bestowed by the communities of learners must have been due to our philosophy; educate young minds to be prepared as the future scientists, doctors, engineers, and also skilled workforce for prospering career. This is addressed at GSS with the help of redemptive educational systems and new approaches that constitute education on student centric teaching.



While gearing our success history with +2 science program ahead, we don't want to be self-complacent. This is met by being prepared to take up growing demands from our respected parents and loved students and make our efforts persistent in modelling Global school of Science as an exclusive center where Study in Science is primarily for knowledge and innovation. This core priority is materialized through our motto that is to excel in education, our pedagogical practices and teaching-learning processes that design not just to impart theory but skills in Science.

Teaching with technological endowments has been our overbearing priority at GSS. This is assured by our professional team of faculty who are trained to use advance technologies and facilitate individual student even beyond the classroom through activities that are shaped upon the scheme to augment scientific skills. Our expert team of faculty are oriented on educating process that is adequate in offering individuals scientific and quality learning experiences. GSS faculty engage students in the all-round learning exposures in a research oriented and innovative learning model that is technologically modern and academically systematic.

Finally, as continuous efforts are instrumental for transformation of an institution, I commit to make myself persistent for building GSS as an exclusive center of +2 Science in true sense and take this opportunity to welcome all potential members who are keen to join GLOBAL SCHOOL OF SCIENCE for being prepared to be the future scientists, doctors, engineers...

**Amba Datt Joshi, M.Sc.**

Principal

## FROM THE ACADEMIC DIRECTOR

I am glad to convey that Global School of Science (GSS) under Global College has set a top-notch niche as being a leading learning center for science within Nepal. Promisingly competent and aspirant students seek to join GSS for an exclusive study of science. The craze shown by competent circles of learners speaks quite a lot that GSS has set its image as being the best center of science education that rewards every single student with a learning experience that is distinctive in quality.

The distinctive identity of GSS is in; 'student first approach to education' incorporated in classroom setting and beyond. In keeping with this framework, expert faculty integrate the interdisciplinary tool in teaching that seeks to design learning in the problem solving exercises integrated with real-life experiments as vital for construction of knowledge. Classroom instructions consist of tasks that allow each student to participate and generate new concepts on diverse subjects relating to science. Interactive approach to teaching and learning, in our best understanding, will drive our students to graduate with applied skills as vital to cope with new encounters of University education that they seek to enter when graduate the secondary level in science.

In pursuance to deliver best quality education in Science, GSS has deputed renowned faculty with proven track record in teaching and research with impact in science. The subject instructors of GSS integrate

skills and technologies that are appropriated upon building teaching as a process where the students are engaged in experiments and learning is resulted in the construction of knowledge. The approaches as these come rewardingly for Science students specially who bear multiple learning tendencies.

Inspired to developing GSS as an exclusive center of +2 Science, we shall leave no stone unturned in pursuit of our ambition and that is to prepare every single potential student be the future scientist, doctor, engineer...

Finally, my acknowledgement to the respected guardians and aspirant students who have bestowed upon incomparable degree of trust and joined after the ongoing mission of GSS that is to foster scientific skill and acumen for better self and society. With hearty invitation, I welcome you all to GSS, an exclusive center of +2 Science.

**Dev Raj Paneru, PhD**  
Academic Director

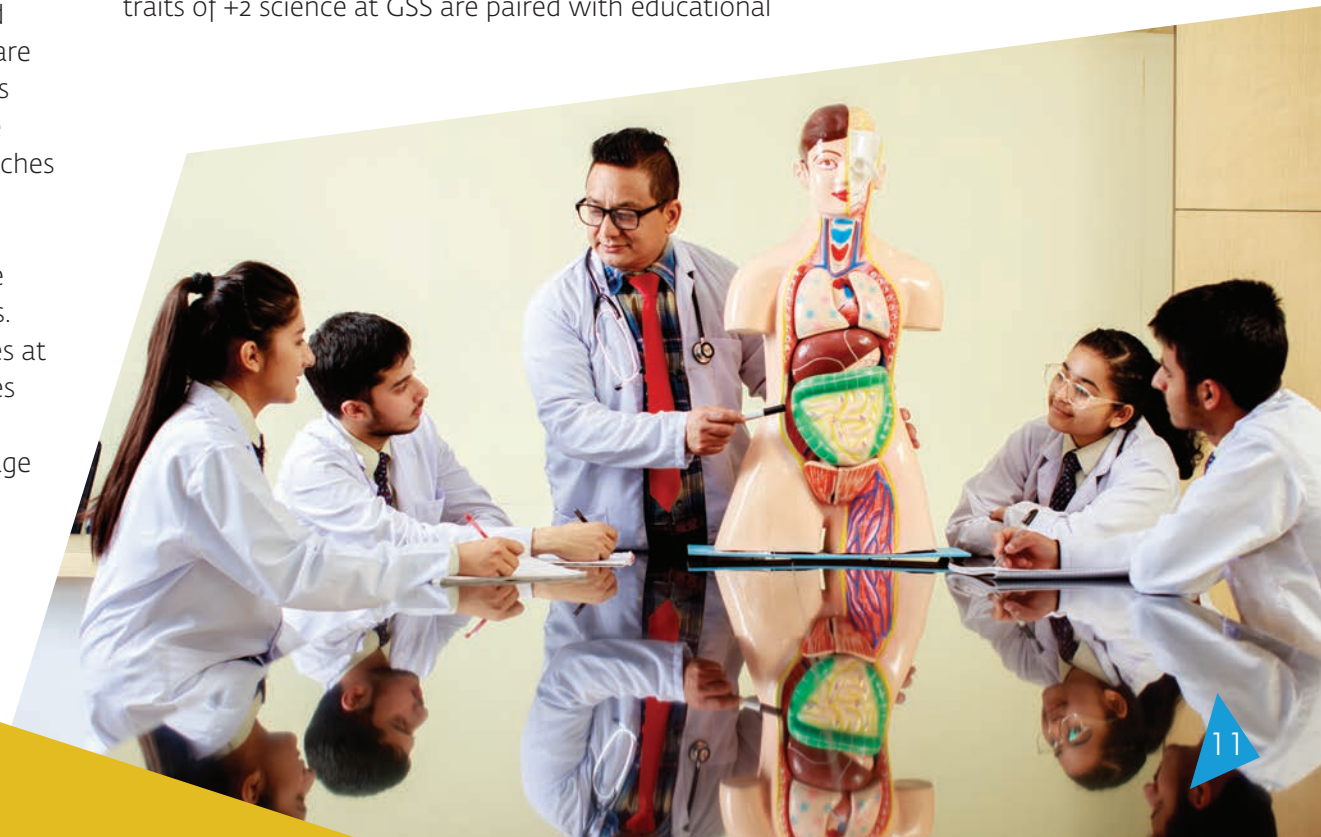
**Inspired to developing GSS as an exclusive center of +2 Science, we shall leave no stone unturned in pursuit of our ambition and that is to prepare every single potential student be the future scientist, doctor, engineer...**

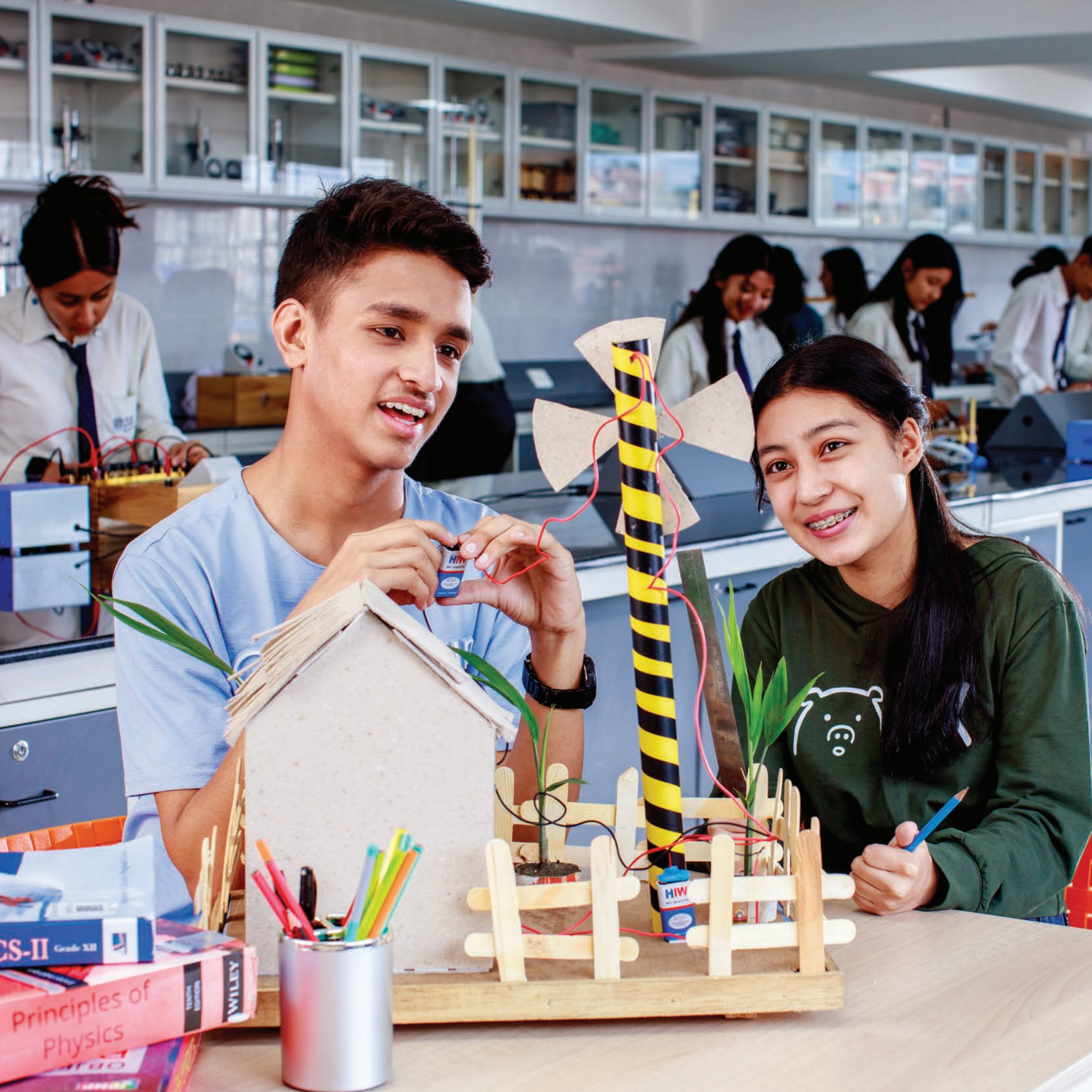
## GLOBAL SCHOOL OF SCIENCE


Global School of Science (GSS), under the ownership of Global College, is an exclusive center of +2 science which prepares every individual to be educated in science and technology and use its core subjects of intellectual significance as valuable assets for life to advance within the fast emerging technological cultures. The institution endeavors to deliver science at par the excellence of academic benchmarks having a national and international repute. Within the collaborative systems, the institution operates the science program in compliance with national curriculum also incorporating the international academic and intellectual skills prioritized at GSS for innovation in teaching-learning systems, patterns and practices. In pursuance to our commitment for academic quality in priority, we at Global School of Science appropriate multifaceted modern pedagogy in classroom that is salient in constructing academic process which should adequately encourage students to secure best performance not merely in exams but also beyond in self-generated knowledge resulting from new discoveries of thought, ideas and skills as would be ideal to shaping the 21st century citizens. The learning environment at GSS is profound for educational process to build with academic quality conceptualized in terms of facilities, technologies and resources that are adequate enough to engage both faculty and students in practices of teaching and learning science upon the changing perspective. The classroom teaching approaches at GSS are student-centric and effectively guide the practices for students to experiment, prove and use science as a skill fostering process to successfully cope with new technology induced changes and challenges. The academic systems and teaching-learning practices at GSS develop in guidance of the constructivist principles of education; awareness, autonomy, and authenticity being inclusive for both self-talented and below average

students. We guarantee individual learners a space for self-efficacy practices that are increasingly demanded for the development of scientific acumen in learning communities enrolled at GSS. Being adhered to interactive curricula, GSS stands firm in its journey to offering each young mind experiential learning experiences blended with lab-supported practical courses as special features of teaching science. As such, we anticipate our scholars to grasp science comprehensively as a course of special learning through seamless educational exposures and be able to seize quality learning outcomes.

Every single potential student at GSS is offered plentiful opportunities to learn fundamentals of science not merely in the confinements of centrally imposed curriculum but also in the illumination of knowledge that the practitioners constitute in classroom actions and laboratory experiments organized in the scientifically defined real-situations and beyond. Our mainstream curricula incorporate multiple conceptual, technical, pedagogical etc. aspects of science and technology in compliance with the curriculum effective under Nepal Education Board. In addition, the foundational traits of +2 science at GSS are paired with educational







components including the concepts, contents and skills that are timely updated at the power of research-driven practices as essential to foster in each student scientifically proven knowledge whereby each learner is enabled to deal with natural as well as human induced phenomena in emerging trend in today and tomorrow's context. GSS's mainstream approach is to deliver time-tested and generically valued education also integrating the curriculum that is enriching in the blend of technical and conceptual endowments of science education modelled at the par of national and international standards.

Science program at GSS ranks superb in resource inputs, process and outputs as it combines local and global curricula on the interface. The combination of theoretically salient and practically proven scientific concepts and spatially identified natural and perennial realities and facts at GSS is secured in classroom practices that are adequate in the eclectic mix of the curricula and extra-curricular embodiments that allow both faculty and students to engage in problem solving tasks ultimately contributing to the development of an aspiring learner, the one who can work independently in attaining the most aspired educational goals leading to academic excellence. The blended-learning models at GSS prepare students to be fully acquainted with science and the interrelated dynamics in participatory framework lending each an easy access to valuable academic resources, updated systems, and new educational technology that enable learners to construct knowledge in self-generated awareness, autonomy, and with authenticity. These interactive methods motivate students to self-engage in actions prudently dedicated to discovering meaning of science in partially mediated but self-engaging practices leading to acquisition of in-depth knowledge and multi-tasking competence in different streams such as; biology, physics, chemistry, and other related subjects.

The vision to deliver science for quality educational outcomes at GSS is materialized from the involvement of expert faculty who are trained to dedicate additional academic efforts upon our scheme and it is to nurture each aspirant student who is facilitated in the superbly organized learning environment. In an endeavor to achieving the vision, senior academicians, practitioners, experts, and scientists possessing a professional track-

record in different areas of science are deputed at GSS. In a persistent endeavor to developing educational process within the knowledge construction pedagogical scheme, the subject experts at GSS design teaching that centers students in action given a form under the motivational mentoring of the faculty. As such, GSS substantiates science education in the nurturing of individual students for actions that are mediated to reach the zone of proximal development when each feels her/his creativity garnished at the power of self-initiated practices framed after our vision; 'science for invention and knowledge transformation.'

In a conducive learning environment, GSS collaborates its resources along with students and faculty with national and international educational benchmarks involved in scientific research yielding learning in innovation. Learning collaborations are forged at GSS for multifaceted partnership with diverse educational agencies that too open up new platforms for our learning communities to get connected with the global experts having their instrumental role to hook out learner potentials that in turn help to transform hidden talent into learning rewards. In pursuance to this very sought after goal, the science program at GSS is dedicated to study highly persistent in this direction; the concerned departments and faculty are deputed to explore and organize student exchange programs, manage the student participations in Science-exhibitions, Olympiads, and Educational trips, and more... In an intent to keep its academic trajectory agile, GSS has distinguished its approach to delivering science in institutional learning collaborations. This falls under the scheme to build science study a perennial process of learning that results out of classroom practices blended with advance lab-based experiments, learning experiences and innovation. These pedagogical aspects also immensely matter as these play eminent role in helping the communities of young scientists to be acquainted with all-encompassing areas of knowledge and scientific skills that ultimately shall have meaning in being able to transform and develop our students academically so as to shape them into successful professionals. Within these backdrops, GSS articulates its academic philosophy for science in vision, mission and objectives outlined subsequently.

## GSS PHILOSOPHY

GSS embraces the education philosophy that guides to approach science not merely as a verifying system of knowing about the physical, biological, and technological elements of the world in substance, but also, an integrated practice toward mastering the cosmos by being immersed in prolific process of verification, experimentation, and creation of knowledge in discoveries and transformation of skills. Guided by this foundation, GSS articulates its vision, mission and objectives of study and delivery of science education.



### VISION

To be a pioneer of science education, a core science discovering research center and a reputed academic organization of learning excellence with a benchmark niche where every individual is guaranteed of self-explorative and innovative learning environment.



### MISSION

Founded on the principles of developing science within the consistently revised approaches while mediating education as a resourceful teaching-learning process, flexible and participatory system as some key tools, GSS anticipates to develop academically skilled scientists, technology experts, all-known science leaders, and intellectually valuable citizens who would be able to grasp ongoing and also upcoming natural, physical, biological, technological cultures leading all-the required areas for a holistic development of local and global societies.



### OBJECTIVES

GSS aims to impart science education in the state-of-the-art and standard environment enabling every single learner to identify and transform her/his inner potential into working competences, while being prepared to lead the global knowledge communities as a distinguished scientist, doctor, engineer, and useful citizen. Guided by this overarching objective, GSS asserts the under listed specific objectives:

- Develop an understanding and appreciation of science as a comprehensive subject based on different interconnected dimensions, intrinsic and extrinsic features, skills, values and mind-sets engaged to promote scientifically knowledgeable life.
- Provide research proven science curriculum for teaching-learning based on a blend of foundational and interdisciplinary approaches integrated with science pedagogy designed as an exclusive program of research significance in preparing new generations to successfully further study and use science knowledge and skills for mainstream career.
- Foster logically strong scientific mindedness by mentoring school-learners with consistently reformed teaching-learning procedures and training of individuals, organizations, institutions, communities, and society at large.
- Operate physical, biological, chemical and technological science education blended with medical, engineering, information communication technology, computing and more employing innovative learning methods e.g. conferencing, symposium, seminar, virtual simulation methods, applied science experimentation and so on.
- Build a community of competent and caring educators, with rich experience and multi-task perspectives, and reinvigorate them with new methods of teaching-learning science enhanced by means of continued professional development opportunities and faculty exchanges.
- Update and consistently reform the curriculum to ensure implementation in mainstream teaching new scientific ideas, technologies and pedagogies as adopted and in practice across innovative academic benchmarks globally.
- Encourage and facilitate passionate learners to engage in various natural, biological, medical, technological areas of educational practice for learning to discover cause and effect relations binding the objects of investigation also combined with reasons for insights about science in real-life.
- Develop learners intellectually sound, knowledgeable and skilled scientists.
- Motivate circles of learners to be acquainted with science as a self-initiating practice in a caring and conducive learning environment in order to bring the best out of them.
- Instill creativity and innovativeness in potential school-age learners through contemporary approaches of personalized nurturing guidance.
- Make science study a wonderfully pleasant experience.



To be a pioneer of science education, a core science discovering research center and a reputed academic organization of learning excellence with a benchmarking niche where each individual is guaranteed of self-explorative and innovative learning environment.

## PROGRAM DIRECTOR SAYS...



I am excited to have received an endless trust from a large community of potential scholars, parents and stakeholders from diverse background on Global School of Science (GSS), the institution established to be an exclusive center of +2 science under Global College. Highly potential communities of students, supporting parents, mentoring experts, and immensely helpful stakeholders from diverse academic and professional upbringings are engaged upon building GSS.

In the abundance of expert and intellectual resources engaged to building dynamic educational process, we at GSS integrate a series of pedagogical approaches within the transformational framework. Our central curricula are student centric that are then calibrated with the modern technological and intellectual aspects in use. With the student centric pedagogy, we anticipate our graduates will excel not only in study but also be able to pursue science that will include medical, engineering, IT etc. courses in future.

Amidst the increasing competitions, being educated in Science has an obvious reason. My reasons are to offer our young generations an opportunity to experiment and construct self-explored knowledge who should therefore be easy to cope up with and thrive through new challenges that relate to health hazards, natural calamities and so on. In view of these, we lend high priority on innovative teaching-learning practices further systematized with every day, weekly, monthly etc. cycle tests designed to lend students constant exposure to exercise and improve their academic competence and also confidence in order to pass out their exams with commendable score.

I am delighted to announce that our highly qualified faculty provide special attention to individual student with a focus to empower each with skills required to solve the problems

**I am delighted to announce that our highly qualified faculty provide special attention to individual student with a focus to empower each with skills required to solve problems of any kind.**

of any kind. As a matter of fact, teaching at GSS takes a shape in interactive tasks with plentiful experiential exposures also materialized by frequently held educational visits particularly to science and technology centers and outside. The blends of such activities have been fruitful to unleashing learner potential for learning by self-contextualized actions.

In my capacity as a program director, I am encouraged to work even closer with every single student and faculty dedicated to attaining best results and also for the overall growth of GSS as my end goal. Thanking you all for your all-round cooperation and support, I welcome you all to building GSS, An Exclusive Center of +2 Science.

**Gokul Dev Badu, M.Sc.**  
Program Director



GSS students are guaranteed plentiful of experiential exposures to frequently organized educational excursions and visits to national science and technology innovation centers and more...





GSS sets students not merely to receiving information about a subject transmitted one way by their faculties, instead, the students are dragged to learning through friendly interactions even though within their classroom setting.

Our high-tech  
academic building  
exclusively for +2  
Science.



## WHY GSS IS A UNIQUE CENTER OF LEARNING SCIENCE?

Extended on the academic legacy of Global College, Global School of Science (GSS) has been launched and likewise managed as an exclusive center of +2 Science. GSS is recognized among the generations of students and parents as being the heart-in-family institute offering education on making a difference. Within this stature, GSS is operated primarily to fostering in students positive thinking and a culture of creating knowledge for individuals to be able to live scientifically valued and respectable intellectual and social life. GSS prioritizes to impart education in guidance of interactive pedagogical frameworks practised mostly in the innovative situations. Under this module, each student at GSS is trained to take an ownership of learning shaped as an experiential practice that enables individual learner to recognize and construct knowledge as a smart intellectual system embodied in skills of research and innovation. GSS promises learning environment and facilities where young minds being trained for learning in self-motivation, immerse individually as well as in team structures in academic, explorative and research practises. Explorative and research designs constitute education in the exposures of multiple ideas and concepts that eventually lead potential minds to learn making connections not only among human agencies but also with global thoughts, academic and work-life dynamics and more...

GSS combines all its educational endeavors with selectively statured best facilities and IT-support systems availed at par of the international standard and also effectiveness. The in-house features constituted in the harmony of fine-tuned infrastructure decorate GSS as a state-of-art educational institute managed in the entirety of benchmarking physical as well as

academic, and intellectual environment making a distinct convergence. The richness of learning environment at GSS is lively and it constructs in the mixtures of interior segments and learning facilities extended at the annexation of modernized science laboratories together with all the way globally acceptable new technologies installed in the mainstream educational and administrative system of the school. GSS operates both educational and administrative undertakings supported by digital and online management information system (MIS) that connects the central library, study and activity halls, beyond the classroom learning platform desks, and other learning centers created to build learning as a process of experimentation, self and team participated action of reflection and reformation. Together with various common educational assets and teaching aids, GSS has installed and assures each individual practitioner



optimum access to and use the modern technology-based teaching-learning accessories and assets. The interiors are fully equipped with multimedia, TV and radio studios, digital as well as e-learning, and virtual simulation systems, tutorial and e-library facilities, and other learning equipment that allow students to practise science also via online school learning system (OSLS), management information system (MIS), learning management system (LMS), moodle learning system (MLS). Online virtual and live class system (OVLCS), and online collaborative video conferencing system (OCVCS) and others...

Augmented at the strength of cutting-edge academic and educational technology and superb learning environment also supplemented with quality involvement of professionally sound human resources, GSS stands among those few leading and vibrant education benchmarks recognized to be the most innovative institutions that are unique for learning science.





## SCIENCE COURSE COMPOSITION

### GRADE XI

#### PHYSICAL GROUP

- Physics I
- Chemistry I
- Mathematics I /  
Social Studies I
- Computer Science I
- English I
- Nepali I

#### BIO-GROUP

- Physics I
- Chemistry I
- Mathematics I /  
Social Studies I
- Biology I
- English I
- Nepali I


### GRADE XII

#### PHYSICAL GROUP

- Physics II
- Chemistry II
- Mathematics II /  
Social Studies II
- Computer Science II
- English II
- Nepali II

#### BIO-GROUP

- Physics II
- Chemistry II
- Mathematics II /  
Social Studies II
- Biology II
- English II
- Nepali II

A male and female scientist in white lab coats are examining a brain model in a laboratory setting. The male scientist is pointing at the model while the female scientist holds it. They are both looking at the model with interest. In the background, other people in lab coats are visible, suggesting a busy laboratory environment. The scene is brightly lit, likely from large windows.

The scheme on the ground is to make a difference in our educational process that should virtually fascinate every single student to acquire knowledge, self-generate skills and enhance scientific acumen where one discovers knowledge of different areas of science

## DISTINCTIVE ACADEMIC APPROACHES

Academic approaches and teaching-learning strategies at GSS are set within and beyond the centrally taxed curriculum and the course compositions. The two-year +2 Science is an academically challenging course designed under the scheme of learning that should address intermediary and pressing aspects influencing the transitional phases of young pupils' life.

Holistic transformation of scholars from their vibrant mental frame to cognitive maturity demands a high level of motivation to enable a focus upon the pre-set goals. This at GSS is materialized with our pedagogical patterns and approaches framed succinctly with features that allow teaching levels to touch students' heart, create in them learning interests and fulfil satisfaction also in the mean time being engaged in a process of education that not only transmits but leads to construction of scientific knowledge.

The teaching-learning methods under the curriculum with consistently updated syllabus at GSS hold with a scheme that sets scholars to construct education using both primary as well secondary sources of knowledge. The scheme in the ground is to make a difference in our educational process that should virtually fascinate every single student to acquire knowledge, self-generate skills and enhance scientific acumen where one discovers knowledge of different areas of Science in intellectually garnishing observations, self-initiated studies, experiments, and contextually validated actions which are helpful to transforming the practitioner into an intellectual workforce who can contribute positively



to transforming the society into a better place for today and tomorrow.

+2 Science program at GSS has a craftsmanship of integrated educational systems that can challenge young minds into taking a more inquisitive and creative involvement and approach to work and life. The teaching faculty members are well trained mentors deputed to help students know how to make connections amongst ideas encompassing various interdisciplinary areas of knowledge that should be tantamount in quality and use the courses of study as a channel to reach, see for self-realization and extract the best of knowledge out of the situation granted.

The classroom activities and study procedures at GSS are not limited to learning but framed as experiential

courses that interface scientific experiments, art, music, dramatics, cultural actions, practitioner collaborations, and other various dynamics that help study of life sciences be manifested in education acquired in the self-constructed knowledge. Apart from the infusion of interfaced disciplines, our academic approaches and classroom strategies involve use of latest editions of modern technologies and technology supported actions, experiments, modelling, demonstration and more in addition to the use of paper, ink and pen, and hence, creating learning in the outcomes of project, research, interaction, and multi-literacy discussion etc. types of interactive practices that contribute to modernize education. The everyday teaching-learning also annexes the pre-medical and pre-engineering preparation classes that should help students pass architecture, medical courses, and engineering etc. entrances when they graduate +2 level in Science. With the academic approaches and teaching-



learning strategies as such, GSS articulates a uniqueness as being the excellent and exclusive center of + 2 Science where rigorous academic maneuvers are purposively combined with technically and conceptually crafted innovative learning practices in preparing students of science as intellectually proven human resources; able human beings who shall have no grudge to coping, controlling, and using both natural and man-made real world for the benefit of humanity.

Fully equipped classroom having central air-conditioning, seminar halls, and computer labs, unlimited internet access, audio-visuals, resourceful libraries, fine-built science labs, study- workshop centers, stage performance halls, meeting

venues and many more... are some of the special features of physical and academic environment and techno-centric position reserved by GSS. The physical, technological and academic etiquettes offer students very convenient feel of being set in with quality learning environment that is essential for benchmarking educational practices. Some remarkable teaching-learning approaches integral to GSS for knowledge delivery are subsequently described.





## LAB-BASED EXPERIMENTS



Annexed as a follow up course of action on theory, students are divided in practical groups for lab-experiments as mandatory components of science study at GSS. The central lab-activities comprise all the main practical courses undertaken to verify and validate theories also consisting of assessment actions that need to be embedded for learning to result at the nexus of theory and practice. Teaching of all streams of science e.g. biology, physics, chemistry integrates lab-experiments for practical course that mandatorily covers different sub-areas of the main courses.

## TECHNO-LAB ACTIVITIES



GSS lends its students and faculty an access not only to use the conventional equipment for practical work but also the school has installed a techno-lab system and that is to facilitate each component of learning through simulations which allow students to swiftly construct ideas from the use of all cutting-edge educational technologies. The techno-lab facility is assorted with subject teaching integrating experiments staged in the sophisticated science labs where again students are availed to use modern equipment. Animation technologies of simulation system are integral for students to observe the prototypes of science models relating different topics also comprising intellectual activities attempted in the team-work designs. The techno-lab simulations blended with central lab-based experiments are concluded through assessment carried out by the concerned faculty for keeping track of learning and evaluation at the end. The techno-lab activities are constituted as mandatory courses at GSS.

## GROUP WORKS



Teaching-learning at GSS is participatory in principle and also in practice. It builds within the group work model. The classroom practices are staged within and beyond the class hours on regular basis and mostly form with active participation from students divided in groups. Group works as mainstream pedagogical methods at GSS entail the activities that in many cases are initiated by students to actively engage in tasks that build upon solving problems relating diverse topics of science. Besides, group works at GSS engage the students in using plentiful techniques of research e.g. surveying, reviewing, quasi-experiments, full experiments etc. for learning in diagnosing, designing, discovering new ideas and concepts leading to construction of self-internalized knowledge as managed by each participant.

## FIELD VISITS



Extended upon theoretical course, students at GSS are sent for the field visits organised for practical learning to result in understanding of real field or the world of living and nature. Field visits at GSS are organized at an optimum frequency required for students to make observations in group and individually, note the phenomena set in the captivation of science of natural life, prepare reports on findings of the field visits which should be submitted in academically scientifically acceptable format of writing, graphing and presentations. The field visits for observation of natural phenomena at GSS entail reporting upon special areas of science e.g. biodiversity conserved areas, chemical manufacturers and industries, food and beverage production firms and industries, technology parks. Besides, GSS has signed up partnership with several industries and institutions working in the area of science and technology innovation lending our students an easy access to their resources for learning exposure.





## PROJECT LEARNING



Project-learning is a research-based approach to study science and GSS adopts this practice as a mainstream pedagogical strategy for education to build in scientifically validated and logically organized framework of learning. As one of the most emphasized strategies, project learning involves students and faculty in research actions who collaborate purposefully to conduct subject and topic-focused lab experiments carried out individually as well as in groups as would demand each course of science through annual studies. Inquiry tasks, observations, survey-based projects, and science-exhibitions are a few selective methods integrated at GSS with project-learning. This model in our experience has been successful to promoting students' knowledge and enhance in them research skills whence the practitioners become able to analyze and interpret the phenomena independently and present their self-created understanding in a scientific way. The projects undertaken by the students at GSS entail diagnosing and analyzing problems in the subjects and on the field and thereon designing presenting tasks that encompass study of Physics, Chemistry, Botany, Zoology, Computer Science, and Technology etc.

## WORKSHOPS AND PRESENTATIONS



Workshop and presentation activities and skills are of special emphasis in helping practitioners to manage learning in collaborated action and team-construction. These skill-focused activities at GSS are undertaken by students in collaboration with their tutors both in the classroom setting and beyond as follow up learning engagements that complement with lectures and discussions held thematically to address different areas of science. For the presentations to shape self-initiated learning as a mainstream process, GSS students are provided with technical and logistic support at phases of preparation. Presentations consist of tasks that entail reviewing readings, exploring materials, organizing the findings in project reports, essay forms, academic articles that are then shifted in the power-point slides for presentation. Student quality circle meetings, subject and theme relevant workshops, seminars and interaction sessions are common exponents of workshops and presentations as mainstreamed at GSS.

## RESEARCH WORKS



As an exclusive center of +2 Science, GSS operates science program with top priority in the problem-based research works as instrumental to developing learning in building connections between past theories and knowledge in lab-based experiments and field research. Along with the mainstream pedagogical designs and practices that build educational process in the interaction of multiple dynamics on interface, students at GSS are exposed to research works that entail intellectual tasks of reviewing and/or meta-analyses of secondary sources as well as field-based projects in which primary sources are observed, surveyed and explored for scientifically validated information. Research works at GSS include topic or problem-focused expeditions, field observations, lab-experiments, observation of natural and environmental systems, technological developments, and more... covering various areas of life science. Research works as a central-curricula are concluded in the annually and occasionally held events such as science exhibitions, science Olympiads etc. in that students' involvement is primarily centralized to prepare science-models, science projects in different areas e.g. electronics, digital technology, general and health science, natural science, bio-chemicals, mathematical applications etc.



## COUNSELING



In an academic realm made up to delivering education within student centric approaches, counseling is central and it's in view of a common necessity of scaffolding learners who need to immerse in problem-solving endeavors. Learners at adolescent stage tend to develop unidentified perceptual values either being ruled by ignorance or due to peer pressures that usually come with irresistible power. At such junctures, counseling due to its psychological power can help adolescents overcome a series of pandemics and fatalities, avert dilemmatic miss-conceptions, and cope with variously affecting indispositions that come associated with age-factors, and other challenges. Considering high level of significance, counseling at GSS is practiced as a constructive and so, better alternative over practices of adversely affecting panelizing approaches. As a creative strategy, we at GSS give high priority on counseling that tremendously helps our young ones sort out psychologically insinuated problems and study pressures hampering intellectual sharpness and in turn adversely affecting career prospects. At times, a central focus is placed on counseling and guidance served by experts deputed at GSS to guide students throughout. Career counseling at GSS involves enabling students to envision, explore and select better study options and techniques and also be prepared to pursue better academic course considering its relevance for career to follow on successful graduation from the program. GSS has deputed full time working experts along with renowned visiting professionals from the field of psychology and career counseling.



## SOCIAL WORK



Learning should not be confined to practising technical skills that merely empower one to meet professional objectives even though successfully. A better option for educating young minds with holistic meaning of education is blending social action and/or social service that should be flexibly practiced in order to enable them to recognize superiority of human values gearing education for all-inclusive benefits. Keeping in view greater significance social service seems to hold linking a necessity to impart education for all-inclusive benefits, GSS organizes strings of out-reach programs that involve the students to volunteer in social works in various ways. These practices lead students to reach the communities facing natural or human induced hazards who might be aspiring external support to survive through. Under this scheme, GSS mobilizes its students to raise fund, collect logistics of basic needs, and volunteer the services that come supportively to the communities and individuals under crises to have get through. The penultimate objective of social work at GSS is to foster in young minds a feeling of humanity and take up social responsibilities as and whenever required.



## STUDENT- PUBLICATIONS

GSS has several publications made public at different occasions annually. Among all, the institutional magazine is one of the most participative and intellectually engaging publications which has the legitimacy to be entitled student-publication. This annual magazine involves active coordination of GSS scholars and it disseminates all the most intellectually valuable creations contributed by the students together with interesting writings authored by the faculty members who volunteer literary compositions respectively intertwined with subject-focused works having their educational importance. The students at

GSS are trained to create compositions of varying kinds which however must scale up learning significance. Under this frame, individual student is guided to prepare survey papers, write reports on their subject-based experiments, compose articles relating to different fields of science, write stories, anecdotes, fiction, essays, compose poetry etc. Writings on scientific inquiry, discoveries or inventions are published in the GSS bulletin. The GSS faculties, experts and practitioners equally facilitate and participate in writing for the annual research as well as student-publications.

## PRACTICAL EXAMINATION

Prior to the final examination held annually, the GSS students take upon the practical exams which consecutively play a central role and contribute to the board results in the subjects; Physics, Chemistry, Botany and Zoology, and Computer Science. Students' scores in these subjects acquired in the practical exams are endorsed in the board examination that is held under the sole authority of National Examination Board (NEB), Nepal.



## ASSESSMENT

As a progressive and performance oriented academic institution of Science, GSS has developed very dynamic assessment system. The assessment in its entirety constitutes at the strength of formative tests that include class tests, cycle tests, weekly tests, and the terminal examinations organized regularly. The tests serve a purpose that is to examine the students level of understanding of what has been taught integrated with the final pre-board and board examinations that include the written cum practical exams held at the end of each academic session for decision on upgradation from 11 to 12 grade.

Keeping along with the mandates and the compliances of the board examinations, we at GSS operate the internal exams together with informal and intuitive evaluation systems and the main reason behind this is because the internal measures allow to evaluate students' progress while learning becomes continuous with instant corrections made possible. In addition, the formal and informal evaluations coupled with intuitive testing and learning systems such that take a shape in the form of projects, practical lab-experiments lend a constructive scope to evaluate student learning conceptualized as an act of problem-solving skill. The internal examinations and cycle tests are designed to train students who shall be required to respond to and get through the external exams successfully.





## STUDENT INITIATED CELEBRATIONS

Celebrations in general entail different cultural and social events of educational and cultural value that at GSS are prioritized with a view to promoting in learners, a respectful attitude toward human society as well as local and global cultural values. To this vision, GSS organizes several co-curricular and extra-curricular events among those, day celebrations are main. Some important events in this scheme include public exposure programs, communication programs

e.g. debates, extempore speech competitions, presentations, report writing, essay-writing, story writing, MUN, and others. All national and local days of cultural significance are observed at GSS in that students are encouraged for active participation with different recreational as well as creative items entailing stage performances, dance, music, singing, dramatics etc. as some instances.



All national and local days of cultural significance are observed at GSS for which the students are encouraged for active participation with different recreational as well as creative items entailing stage performances.

# HUMAN RESOURCES

Global School of Science is a leading academic institution under the corporate ownership of Professional Educators. Together with a pool of human resources associated with this institution holding an eminence in respective academic programs, GSS has expert team in its faculty deputed to dedicate the best possible academic efforts for student learning, happiness and welfare.

The programs under faculty development scheme at GSS involve staff and faculty participated seminars, symposia, conferences, orientations, and training etc. in that the members participate as organizers, attendees and presenters. The staff and faculty at GSS are availed of opportunities to participate in the programs and training organized within or by other institutions over the period of a single academic session. We have this in our notice that the human resources at GSS benefit immensely from the professional development

programs aimed to alleviate the practitioners' level of professional confidence. Guided by empowering concept, GSS assures of an enriching human resource development system that exposes each personnel to learning environment with quality maintained at par the standards would be required to motivate employees for better performance. Quality and competent human resource is an exceptionally demanding feature of GSS. In this way, the institution guarantees intake and management of competent human resource at all levels. For the faculty performance appraisal, GSS uses a standard assessment tool designed within the global competence framework practiced at innovative educational benchmarks as the role models in managing human resources for better job performance such that required for the quality administration of +2 Science Program.

## ACADEMIC DEPARTMENTS

Academic Departments at GSS are comprised of the here listed subject departments and sections that the subject heads are deputed to lead. Each department has its full-time, part-time and visiting faculty members deputed to deliver the science program in an outstanding way possible.

### FACULTIES OF SCIENCE

#### ENGLISH

Amina Paudel Joshi, M.A.  
Ananta Khanal, M.Phil (PoU)  
Shreeram Prasad Silwal, M.Phil  
Urma Lama Yonzon, M.Phil

#### MATHEMATICS

**Bimal Pandeya (HoD), M.Sc.**  
Bekha Ratna Dangol, M.Phil  
Gokul Dev Badu, M.Sc.  
Lila Prasad Bagale, M.Sc.  
Narayan Pandey, M.Sc.  
Rajan Shrestha, M.Sc.  
Subash Dhakal, M.Sc.

#### NEPALI

Archana Pokharel (Koirala), M.Phil.  
Chandra Bahadur Khadka, M.A./B.Ed.  
Resham Bahadur Adhikari, M.A.

#### COMPUTER SCIENCE

Ajay Kumar Chaudhary, M.C.A.  
Dhirendra K. Yadav, M.Sc. (CSIT)  
Roshan Dangi, M.Sc. (IT)

#### PHYSICS

**Khem Raj Deuja (HoD), M.Sc.**  
Ambika Prasad Regmi, M.Sc.  
Bashistha Chaudhary, M.Sc.  
Ganesh Prasad Parajuli, M.Sc.  
Gyanendra Bhatta, M.Sc.  
Hari Sharan Regmi, M.Sc.  
Hiranya Lekhak, M.Sc.  
Omkar Joshi, M.Sc.  
Subash Pokharel, M.Sc.  
Janak Shrestha, M.Sc.  
Dhruba Paudyal (Lab Assistant)  
Gokul Bhandari (Lab Assistant)

#### CHEMISTRY

**Jay P. Paudel (HoD), M.Sc.**  
Gautam Jha, M.Sc.  
Ishwar Chandra Rijal, M.Sc.  
Mohan Raj Bhattarai, M.Sc.  
Prem Raj Shrestha, M.Sc.  
Rajesh Kumar Poudel, M.Sc.  
Swastika Shrestha, M.Sc.  
Uday Chandra Dahal, M.Sc.  
Mani Basnet, M.Sc.  
Lal Bahadur Karki (Lab Assistant)  
Rishikesh Bhandari (Lab Assistant)

#### BIOLOGY

**Rojan Tapol (HoD), M.Sc**  
Devi Prasad Kharel, M.Sc.  
Keshab Raj Gyawali, M.Sc.  
Samjhana Joshi, M.Sc.

Asso. Prof. Som Prasad Poudyal, PhD  
Puja Joshi, M.Sc.  
Pramod Dulal (Lab Assistant)

#### VISITING FACULTIES

Prof. Ajaya B. Sthapit, PhD  
Prof. Prakash Muni Bajracharya, PhD  
Prof. Chet Raj Bhatt, PhD  
Prof. Madan Shakya, PhD  
Prof. Shekhar Gurung, PhD  
Asst. Prof. Bishan Datt Bhatta, PhD  
Karan Singh Thangunna, PhD

## ADMINISTRATIVE STAFF

The administrative department at GSS is managed by expert members holding respective designations that include CEO, deputy managing director, principal, academic director, coordinator, admin officers, IT officers, and staff working in a team. The administration staff are a full time working members who ensure all-round operation and logistics support together with their vital role being to assist the faculty for an effective implementation of teaching-learning strategies and endeavors toward achieving the high academic targets the science program is designed for.

#### CEO

Khagendra P Ojha, PhD

#### DEPUTY MANAGING DIRECTOR

Drona Lal Puri, PhD

#### Principal

Amba Datt Joshi, M.Sc.

#### Academic Director

Dev Raj Paneru, PhD

#### Program Director

Gokul Dev Badu, M.Sc.

Navaraj Bhandari, *Finance Director*  
Dharma Raj Ojha, *Operation Director*  
Bhim Gautam, *IT Manager*  
Bishnu Bhandari, *Program Officer*  
Dev Nandan Chaudhary, *Design officer*  
Prem Krishna Shrestha, *Transportation & Discipline Officer*  
Ritu Regmi, *Front Desk Officer*  
Bijaya Pant, *Librarian Officer*  
Gokul Shrestha, *IT Officer*  
Negam Regmi, *Account officer*  
Birendra Maharjan, *Exam Officer*  
Sandesh Aryal, *IT Officer*  
Yamuna Joshi, *Account Officer*  
Shreya Joshi, *Front Desk Officer*  
Ram Sharan Sedai, *Electrician*  
Mohan Dev Joshi, *Office Assistant*  
Surya Bahadur Bogati, *Security Officer*  
Arjun Bahadur Chhetri, *Security Officer*  
Hema Joshi, *Messenger*  
Minakshi Kharal, *Messenger*  
Ganga Chaudhary, *Messenger*  
Laxmi Sapkota, *Messenger*  
Bam Bahadur Chaudhary, *Messenger*  
Dilip Panta, *Messenger*  
Renuka Chaudhary, *Messenger*



Global School of Science  
Admission Open  
An International Center of  
**SCIENCE**

**GLOBAL  
SCHOOL**  
OF SCIENCE

## FACILITIES AND RESOURCES

GSS operates +2 Science Program in a spacious campus that lends space for modern buildings and compartments offering all the required facilities that equip the learning environment with technology enhanced study centers in adjacent with the administration sections entailing amiably built classrooms, study lobbies, clubs, and beyond the class activity centers, activity galleries and halls, science labs, computer labs, libraries and e-library study sections, play grounds, and more...



### ACTIVITY AND CONFERENCE HALLS



GSS has plenty of centers galleries and halls annexed to and standing apart from the main building and these venues are architected primarily for the purpose of beyond-the-class activities and extra curricula held at different occasions. The main venues include medium sized seminar hall adjoined with a very spacious conference hall having capacity to accommodate more than 300 participants at a time. The activity halls are fine built also availing the AC and other sanitizing facilities. Equipped with the multimedia and sound system, modern technology systems and others, the halls are perfectly built having features such as stages, interiors and other structures that are required for staging dramatics, conduct stage performances, music, dance etc. programs and competitions. The activity venues are all equipped with the smart and online LMS developed at GSS for knowledge management that aims at supporting and/or operating different programs of academic and intellectual importance. The activity halls are also occupied with co-curricular and extra-curricular activities and these entail; interdisciplinary and issue-based workshops, seminars, project-presentations, talk shows, science exhibition and olympiad, annual national and international conferences, and other events organized at different times.

### LIBRARY



GSS has a central library adjoined with the e-learning centers also connecting the online learning management system (LMS) of the institution. The library at GSS maintains a wide collection of valuable books on varying subjects including special stocks of study sources on science and technology. The additional sources as useful for research and study stacked at the central library include volumes of encyclopedia, dictionaries, periodicals, journals, magazines, bulletins in print and soft version. Along with, the library installs advance digital and e-learning systems connected to a range of knowledge resources allowing the end users an unlimited access to global learning media, online platforms, and publications. The central library aligned with the e-learning facilities serve multiple purposes at GSS; avail multiple and rich hard and soft sources for reading, reviewing and researching. Besides, the central library being connected with the LMS supports teaching-learning process and that includes maintaining teaching and learning materials online, maintaining and sharing data, operating and communicating online tests, and examinations, maintaining assessment records etc..





## CAFETERIA



GSS manages the cafeteria involving professional team academically educated and vocationally trained on hospitality management who bear sound knowledge of science of food and beverage. The cafeteria managed by the professional hospitality team at GSS serves a variety of local and continental menu to its regular and visiting members that include faculty and staff, students, visitors, and guests. The cafeteria operates from morning first hours to late evening over all working days of a week. Besides, GSS with its central mechanism deposes the operations and administration head who is assigned the responsibility to control quality and service of the cafeteria with a special attention on hygiene factors being sensitive to people's health.





## SCIENCE LABS



GSS has a rich arrangement of science labs that combine physics, biology, chemistry, and techno-labs added-on at different locations within the compound of the science buildings. The labs are availed with an assortment of equipment that consist of a repertoire of structural and mechanical instruments, tools, and technologies installed in proportion to a total number of students in each class. All labs at GSS have been well-equipped with all types of necessary devices and instruments arranged in number that suffice for each student to use in the required frequency and amount during the practical course of study in science.





## INFIRMARY, GUIDANCE AND COUNSELING

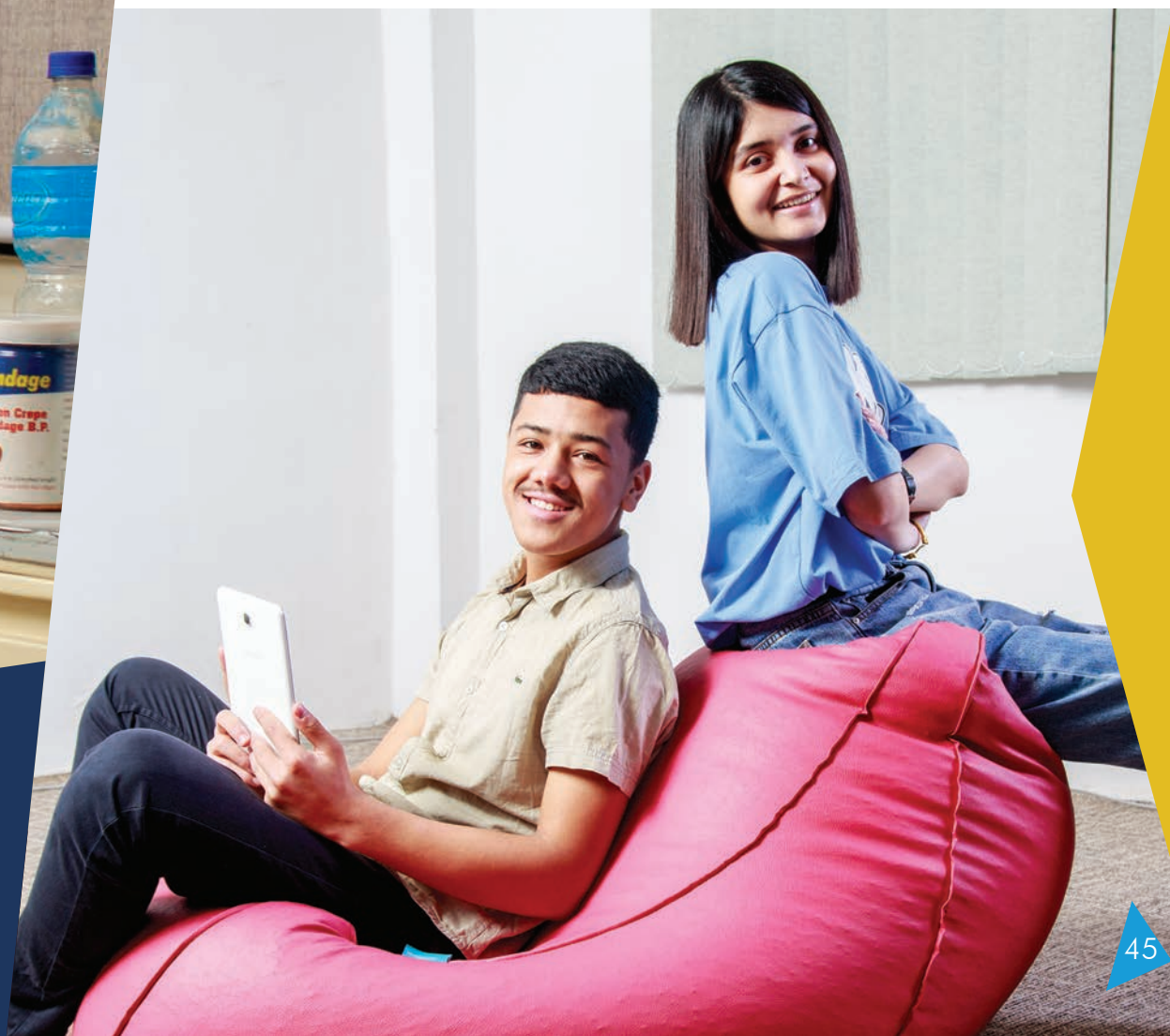
As a center of academic excellence for Science education, GSS operates its academic program supported by the high-tech amenities installed within world class campus building set on the state-of-the art infrastructure and spacious campus premises. One of the very important amenities at GSS is its infirmary center that is ultramodern in structure and highly equipped with the smart medical equipment which are required to be maintained in a primary health center. The infirmary of GSS is managed by the full time based professional nurses. Together with the nurses, the college has deputed expert psychologists whose task is to guide the students through their study endeavors and offer counseling service to the ones who need additional support to overcome their psychological as well as emotional problems. The professional nursing staff offer primary health treatment, hygiene assistance to the students on regular basis and also to the ones who visit the infirmary when facing any kind of primary health issues. The nurses are trained not only to provide health assistance to the students but also they are instructed to train the students on how to overcome their private health issues and keep their mental status on balance.





## **SEMI RESIDENTIAL AND RESIDENTIAL LEARNING CENTER**

As an annexed feature required on making the study environment more enriching, GSS offers its scholars seeking extra study support beyond-the-class learning, an opportunity to join either the residential or the semi-residential center offering a facility of dormitory and/or hostel for a fixed period of 2 years. The residential center is located in the proximity of the science building whereas the semi residential sections are annexed within the science block that function in the direct supervision and management of +2 Science faculty members, director and coordinator. These centers are designed to cater the needs of students desiring for a close inspection, guidance and support that could play a vital role to bringing out the best from the learners.





## SPORTS



As integral for raising a sense of responsibility and motivation in individuals for keeping with healthy environment and health status, GSS gives space for a number of outdoor and indoor sports activities to take place at different terms and annually. On occasions, GSS students organize and also practice outdoor as well as indoor games such as; Futsal, Cricket, Basketball, Badminton and Table tennis etc. through their sports club. The primary intent as served through sports at GSS is to reinforce student's internal confidence that plays vital role in developing one's competence as would be required to accomplish physical and intellectual endeavors. The sports endorsed as regular and also term-based extra-curricular activities at GSS generally help students recognize their confidence level, identify and make efforts toward honing their team work skills that are addressed by means of their self-intuited participation in physically and intellectually demanding games. GSS encourages every single student to reinvigorate sportsmanship that would be beneficial for reshaping intellectual capabilities as would be essential to self-motivate and make better physical and intellectual efforts in order to acquire the best from learning science.





## TRANSPORTATION

As a comprehensive academic institution that guarantees educational as well as logistics and other facilities with benchmark quality, GSS offers on demand very congenial transportation facilities to its students who are required to travel daily from different parts of Kathmandu Valley. Students from different locations within Kathmandu, Bhaktapur and Lalitpur are encouraged to book the buses and mini buses for conveyance. The vehicles managed and facilitated by well-trained driving and support staff are arranged to transport students from any part of Ring-road on monthly and yearly basis.

## COMPUTER LAB



Computer lab is a basic requisite that at GSS accommodates digital or information communication technology (ICT) that has entered the realm of its didactic system as the emerging integral educational media having a power to avail faculty and students as the end-users with global thoughts, concepts, content, knowledge, and skills etc. effectively as required to smoother learning in science and technology. The computer technologies with their power to store, mobilize data in cloud and bring global knowledge in unparalleled efficiency play a vital role to accelerating the modernizing process of science education at GSS for an inclusive development and benefit of its knowledge communities. In an effort to standardize with technological eligibility, GSS has installed a sophisticated computer lab equipped with branded desktops in sufficient number also supplemented with educational kits that consist of tablets and laptops. The recent editions of branded computers and laptops in the computer lab by means of LAN and WIFI, are networked with unlimited internet facility that is used to support a number of ICT and media lending access to academic, research and knowledge resources. The computer lab at GSS also provides student an easy access to globally networked e-learning resources via different virtual and cloud-based technology all that are connected to LMS and central library developed exclusively in use for a support to +2 Science Program.



## SCHOLARSHIP

Keeping in with academic as well as social duty and responsibility, deserving and meritorious students are offered scholarship support under different schemes that are applicable as per the institutional provision of GSS and also the criteria as circulated by National Examination Board (NEB) of Nepal.

Within the schemes provisioned, students representing low socio-economic class or the members belonging to parental circles tagged as marginal community are extended scholarship benefits under the NEB scholarship criteria. There is also merit scholarship scheme at GSS

offered to fairly a large number of students who apply for this scheme. Candidates willing to take benefit of merit scholarships are required to successfully pass out the qualifying exams that frame as competition tests held within the timeliness of admission process every year.







## ADMISSION CRITERIA

### ELIGIBILITY

Candidates seeking admissions to +2 Science at GSS are required to bear educational profile and that includes; SEE or equivalent degree with minimum Grade 'B' (GPA 2.8 above) in aggregate.

### ENTRANCE TEST

Candidates must appear for the officially scheduled entrance test. The entrance papers incorporate objective questions representing different subjects that entail; Physics, Chemistry, Biology, Mathematics, and English.

### PSYCHOMETRIC TEST

With a view to gaining basic but important picture of intrinsic and intellectual status that frame educational intelligence (combination of physical, psychological, intellectual abilities) of individual learner, GSS administers a psychometric test on each candidate through admission process. The psychometric tests designed to preview the candidate's psychic status incorporate the questions that allow each examinee to self-rate the dominance of type of intelligence and psychic status. One of the key intents after the psychometric test is also to assess and identify the leading item of multiple intelligences using that as a strength. On the basis of its result, GSS anticipates to facilitate individual student for study and encourage to practise more in the area for which their individual intelligence has a match.

### INTERVIEW

The successful candidates through the entrance tests are called for an interview accompanied by their guardians/parents. The interview designed for interaction at GSS is used to make parents and students know better about the institution and its systems. Besides, interview at GSS helps the authority to make final decision upon whether to allow or withhold admission of the candidate through process.

### FINAL RESULT FOR ADMISSION

The final result of the candidates for admission is published on the basis of weighted average of the entrance test, interview and SEE score.

One of the key intents after the psychometric test is also to assess and identify the leading item of multiple intelligences using that as a strength GSS anticipates to facilitate individual student for study.





**Global School of Science**  
(Under Pro-Ed. Limited)  
Baneshwar, Kathmandu-31  
P. O. Box No. 24855, Kathmandu  
**Tel:** 977-1- **4480135, 4480136, 4480860**  
**Email:** [science@globalschool.edu.np](mailto:science@globalschool.edu.np)  
**Web:** [www.sci.globalcollege.edu.np](http://www.sci.globalcollege.edu.np)

 **Facebook**  
[/globalschoolofscience](https://www.facebook.com/globalschoolofscience)

 **YouTube**  
[/globalschoolofscience](https://www.youtube.com/globalschoolofscience)

 **Twitter**  
[/globalschoolofscience](https://twitter.com/globalschoolofscience)

*An Exclusive Center of +2 Science*